

NATIONAL BROKERS LIMITED

<http://nationalbrokersbd.com/>

Tea Auctioneers since 1948

TEA MARKET REPORT – Sale 38 held on Monday 23rd January, 2023

CTC LEAF: 49,762 packages of Current Season teas on offer met with a fairly good demand.

BROKENS: A few clean Brokens available met with a stronger demand and were dearer with competition. The good varieties also held firm. Medium types met with fair demand and were a touch easier with some withdrawals. Plain teas, however, were much less in demand and were easier with more withdrawals. BLF teas met with fair demand and withdrawals were a little less.

FANNINGS: A small weight of good liquoring Fannings met with a strong demand and were mostly dearer. Good descriptions also met with a fair demand and were steady but tended a little easier with a few withdrawals. Mediums followed a similar market but there were more withdrawals in this variety. Plain teas witnessed only some support and were meeting more withdrawals. BLF teas met with fair demand and withdrawals were a little less.

CTC DUST: 12,275 packages of Current Season Teas 12,275 packages of Current Season teas on offer met with a fair demand and sold well. Good liquoring Dusts sold well with Tk.5/- to Tk.10/- lower than last levels. Mediums met with fair demand and sold well. Plain and BLF Dusts also met with fair demand with a few withdrawals. Blenders were active with fair interest from the Loose tea buyers.

COMMENTS: Bright teas continued to attract strong competition and were again a dearer market. Other varieties met with less demand with more withdrawals than last. Blenders were the mainstay of the market with less demand from Loose tea buyers.

Dusts sold well with a few withdrawals.

Our catalogue: (Sale 38) Avg: Tk 200.98, Sold 69.8 % & (Sale 37) Avg: Tk 212.10, sold 73.4 %.

Quotations – This Week – (In Taka)

Brokens	This Week	Last Week	Fannings	This week	Last Week	Dust	This week	Last Week
Large	215-230 nom	215-230 nom	Best	235-255	225-250	PD	190-274	180-260
Medium	210-225	210-220	Good	220-230	220-225	RD	100-298	100-310
Small	210-225	210-220	Medium	195-205	200-210	D	122-289	148-280
Plain	140-160	150-170	Plain	150-160	160-170	CD	150-350	155-400
BLF	130-150	130-150	BLF	130-150	130-150	BLF	130-200	145-200

Exchange Rates 23rd January, 2023 Sterling Pound: Tk. 126.7248 dollar: Tk. 102.0000

Top Prices – This Week

Category – CTC	Garden	Grade	Package	Price	Buyer(s)
Brokens	* Madhupur	GBOP(S)	20	290/-	AKT/Meghna
Fannings	Zareen	PF	10	271/-	Shawon
Clonal Brokens	Kaiyacherra Dalu	GBOP	10	300/-	GT
Clonal Fannings	* Madhupur	PF(BT1)	30	300/-	Meghna/AKT
PD/RD (Incl Clone)	* Balisera	RD	10	298/-	AKT
D (Incl Clone)	Kedarpur	D(BT1)	10	319/-	AKT
CD (Incl Clone)	* Madhupur	CD(BT1)	10	350/-	Power
Oolong	* M.M. Tea Estates Ltd	Oolong	6	1300/-	Ajanta
Yellow	* M.M. Tea Estates Ltd	Yellow	2	1400/-	Ajanta

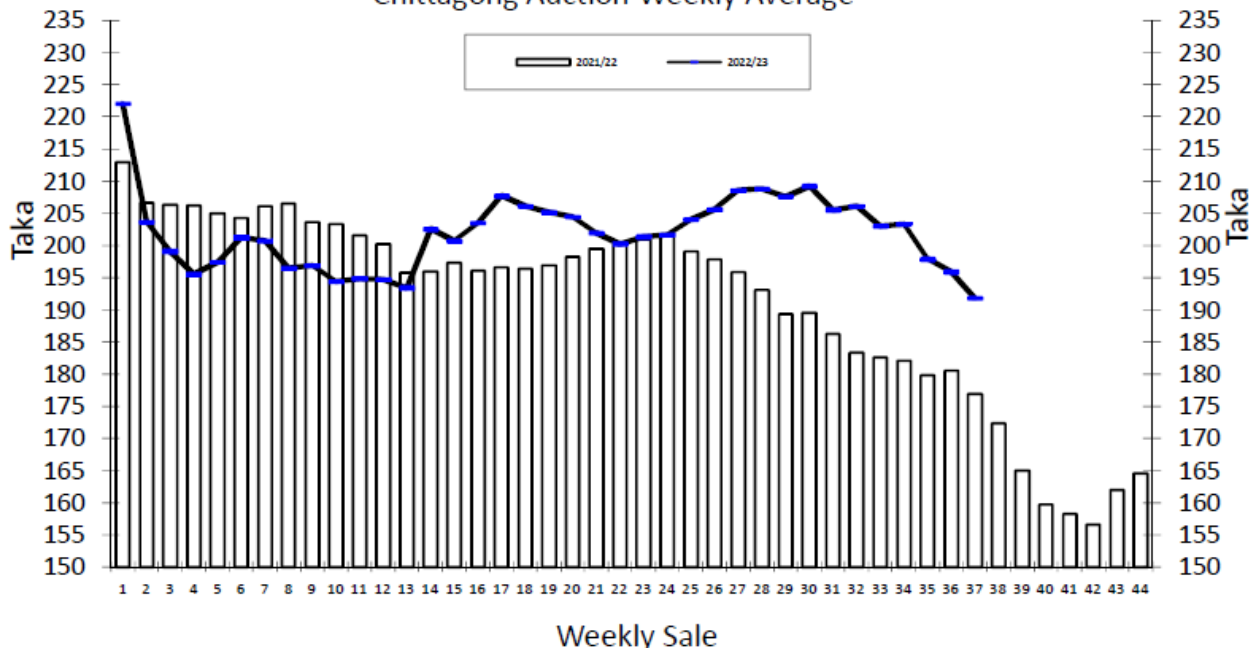
* Above price(s) realised in our catalogue

Offerings

Type	This Sale (Sale 38)				Next Sale (Sale 39)			
	Season 2022-23		Season 2021-22		Season 2022-23		Season 2021-22	
	Packages	Qty/Kg	Packages	Qty/Kg	Packages	Qty/Kg	Packages	Qty/Kg
Leaf	49,762	2,483,124	44,608	2,445,411	51,808	2,585,219	46,288	2,537,508
Dust	12,275	612,523	10,904	590,541	12,027	600,147	9,762	527,866
Total	62,037	3,095,646	55,512	3,035,951	63,835	3,185,367	56,050	3,065,375

Chittagong Auction Average: Sale 37
Season 2022/23: Tk. 191.79 & Season 2021/22: Tk. 176.90

Chittagong Auction Weekly Average



Weekly Sale

Category	For the Sale						Up-to-Date Sale					
	Season 2021/22		Season 2022/23		Season 2021/22		Season 2022/23		Season 2021/22		Season 2022/23	
	Qty. (Kg)	Taka	Qty. (Kg)	Taka	Qty. (Kg)	(%)	Taka	Qty. (Kg)	(%)	Taka	Qty. (Kg)	(%)
CTC LEAF	1,322,622.0	168.64	1,789,074.0	186.58	61,613,144.6	78.5%	191.52	59,049,471.4	79.0%	196.29	-2,563,673.2	4.78
CTC DUST	391,978.1	204.77	471,054.4	211.57	16,628,761.4	21.2%	211.20	15,665,920.3	20.9%	222.07	-962,841.0	10.87
Sub-Total	1,714,600.1	176.90	2,260,128.4	191.79	78,241,906.0	99.6%	195.70	74,715,391.7	99.9%	201.70	-3,526,514.3	6.00
Orthodox	0.0	0.00	0.0	0.00	26,105.0	0.0%	104.44	0.0	0.0%	0.00	-26,105.0	-104.44
Total	1,714,600.1	176.90	2,260,128.4	191.79	78,268,011.0	99.7%	196.09	74,715,391.7	99.9%	201.70	-3,552,619.3	5.61
Green Tea	19.0	1,304.21	2,571.0	551.94	10,876.4	0.0%	504.87	24,526.0	0.0%	565.89	13,649.6	61.02
Oolong Tea	0.0	0.00	0.5	1,400.00	0.0	0.0%	0.00	27.5	0.0%	1,842.73	27.5	1,842.73
Yellow Tea	0.0	0.00	1.0	1,500.00	20.0	0.0%	1,400.00	7.0	0.0%	2,010.71	-13.0	610.71
Total	1,714,619.1	176.91	2,262,700.9	192.20	78,278,907.4	99.7%	195.71	74,739,952.2	99.9%	201.82	-3,538,955.2	6.11
Other (s)	0.0	0.00	0.0	0.00	253,843.2	0.3%	162.94	43,126.3	0.1%	129.18	-210,716.9	-33.76
G.Total	1,714,619.1	176.91	2,262,700.9	192.20	78,532,750.6	100.0%	195.61	74,783,078.5	100%	201.78	-3,749,672.1	6.17

Buyer	For the Sale						Up-to-Date Sale					
	Season 2021/22		Season 2022/23		Season 2021/22		Season 2022/23		Season 2021/22		Season 2022/23	
	Qty. (Kg)	Taka	Qty. (Kg)	Taka	Qty. (Kg)	(%)	Taka	Qty. (Kg)	(%)	Taka	Qty. (Kg)	Taka
Export	0.0	0.00	37,357.0	111.95	24,143.6	0.03%	199.24	56,084.3	0.07%	147.51	31,940.7	-51.73
Internal	1,714,619.1	176.91	2,225,343.9	193.55	78,508,607.0	99.97%	195.61	74,726,994.2	99.93%	201.82	-3,781,612.8	6.21
Grand Total	1,714,619.1	176.91	2,262,700.9	192.20	78,532,750.6	100.00%	195.61	74,783,078.5	100.0%	201.78	-3,749,672.1	6.17

Crop of Major Tea Producing & Exporting Countries

Country	Month	2020	2021	2022	(+/-) 2021	2020	2021	2022	(+/-) 2021
Bangladesh *	November	10.50	10.24	10.84	0.60	79.43	89.57	86.05	-3.52
Sri Lanka	November	24.8	20.2	20.2	0.0	250.2	279.1	231.9	-47.2
North India	November	127.6	104.1	111.6	7.5	981.9	1057.1	1062.4	5.3
South India	November	21.4	16.7	21.2	4.5	201.6	220.0	215.6	-4.4
All India	November	149.0	120.8	132.8	12.0	1183.5	1277.1	1278.0	0.9
Kenya	September	43.4	43.2	38.2	-5.0	419.2	385.6	378.3	-7.3

* Source: Bangladesh Tea Board's Monthly Statistical Bulletin

OTHER MARKETS

KOLKATA SALE 03- 17TH /18TH JANUARY, 2023

CTC: Fair demand for better Assams this week at irregularly easier levels in line with quality. Better medium Assams met with improved demand but at easier levels closely following quality. Good and medium Dooars were steady while plainer/BLF sorts were irregular around last. M/s Tata Consumer Products operated on medium and plainer sorts in the leaf market with less enquiry in Dust market. There was some export enquiry. Local buyers operated on the Dooars.

Tea Category USC/KG	Brokens	Fannings	Dusts
BEST ASSAMS	308-382	271-345	308-395
GOOD ASSAMS	222-296	234-259	247-296
MED ASSAMS	160-210	160-222	173-222
BEST DOOARS	247-296	247-296	NA
GOOD DOOARS	197-234	197-234	
MED/PLN DOOARS	123-173	123-173	

SILIGURI SALE 03- 18TH JANUARY, 2023

LEAF: Good demand. Few liquoring sorts were around last with the remainder irregularly easier. DUST: Good demand at steady to easier levels following quality. Buying Pattern: Internal- Main stay. Blenders – Operated.

CTC/Quotations (USC/KG)	Brokens(USC/kg)	Fannings(USC/kg)	Dust (USC/kg)
GOOD / BEST	247-345	247-333	234-284
MEDIUM / BETTER MEDIUM	173-241	173-241	173-228
COMMON / BLF	117-167	167-234	136-167

COONOOR SALE 03- 20TH JANUARY, 2023

DEMAND: - Good demand. **MARKET:** - The total CTC leaf teas sold this week was **86.07% (618673.78kgs)** of the total offering of **718839.46Kgs**. Upcountry packateers were fairly active. The other regional buyers were selective active. Exporters were fairly active on the range of teas on offer.

CTC Leaf(USC/KG)	Best	Good	Better Medium	Medium	Plain
Larger Brokens	152-197	139-149	136-138	126-134	117-125
Medium Brokens	174-321	149-173	143-148	133-142	123-132
Smaller Brokens	180-236	151-178	147-149	138-146	132-137
Fannings	188-259	159-183	147-157	137-146	127-136

MOMBASA SALE 03- 16TH/17TH & 18TH JANUARY, 2023

There was reduced general demand at irregularly lower rates for the 234,650 packages (15,645,137.00 kilos) in the market with 35.53% remaining unsold.

CTC QUOTATIONS	BP1 – USC	PF1 – USC	PD – USC	D1 - USC
Best	270 – 414	267 – 307	270 – 290	270 – 291
Good	255 – 292	266 – 284	270 – 288	270
Good Medium	255 – 285	266 – 277	270 – 272	270 – 271
Medium (KTDA)	250 – 296	244 – 271	258 – 268	245 – 262
Medium (Plantations)	170 – 260	154 – 241	220 – 256	190 – 222
Lower Medium	114 – 192	120 – 216	120 – 228	125 – 190
Plainer	107 – 148	108 – 180	103 – 186	100 – 154

